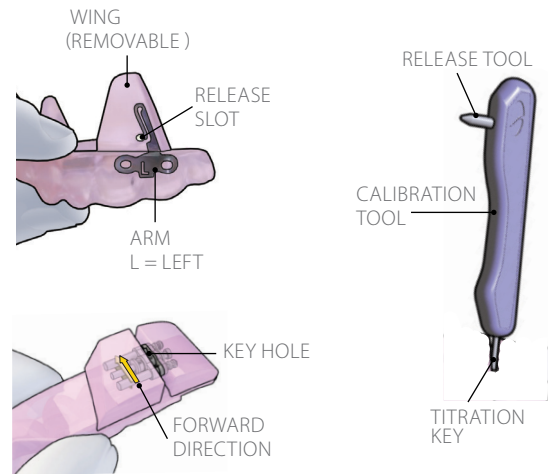


GET TO KNOW YOUR FUSION DEVICE

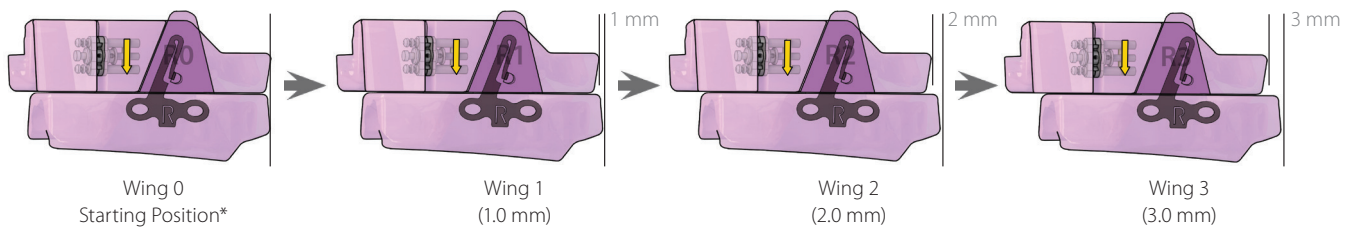
This Guide will help you identify the different parts of your new SomnoDent® FUSION.

WINGS & SCREWS



The FUSION can be adjusted by changing the wings and/or by using the adjustment screw.

ADJUST YOUR FUSION – USING THE WINGS

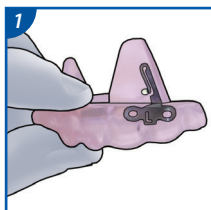


* THE STARTING POSITION IS DIFFERENT FOR EACH PATIENT AND IS DETERMINED BY THE DENTIST.

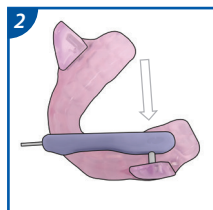
WING	0	1	2	3
ADJUSTMENT (mm)	Starting Position	1.0	2.0	3.0

Your SomnoDent® FUSION can be advanced in easy 1.0 mm steps by replacing the wings, giving up to a total of 3.0mm progression. Adjustments should be made gradually for your utmost comfort.

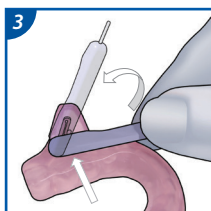
WING REMOVAL



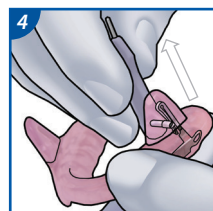
1 Grip lower arch for controlled removal.



2 Align the pin to release slot and gently press pin in place.

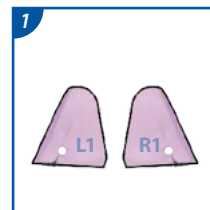


3 Rotate Tool 90° to begin releasing Wing. Note: Firmly press the Tool against the inside surface of the Wing.

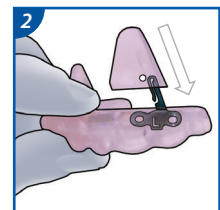


4 Lift Wing in direction of the metal arm.

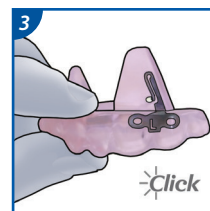
WING INSTALLATION



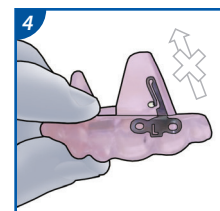
1 Choose the pair of wings. Always fit both wings! Pay attention to the number and the left/right markings!



2 Grip arch and gently push Wing onto arm.

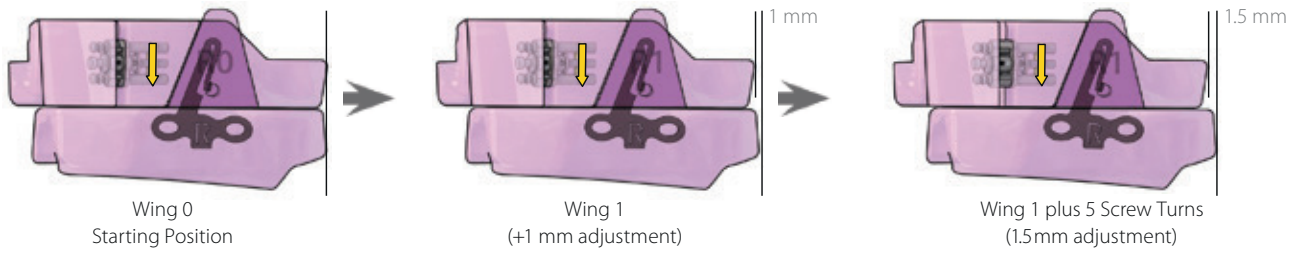


3 You will hear an audible 'Click' when Wing is installed correctly.



4 Installation is complete if the Wing cannot be removed by hand.

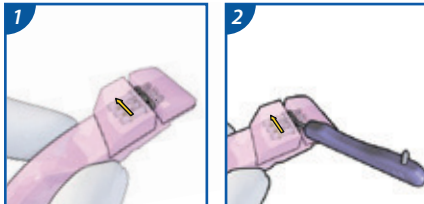
ADJUST YOUR FUSION — USING THE SCREW



	REVERSE ←	→ FORWARD															
90° TURNS	-10	1	5	10	20	25	30	35	40	45	50	55	WING	0	1	2	3
ADJUSTMENT (mm)	-1	0.1	0.5	1.0	2.0	2.5	3.0	3.5	4.0	4.5	5.0	5.5	ADJUSTMENT (mm)	Starting Position	1.0	2.0	3.0

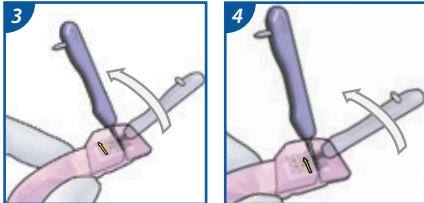
Your SomnoDent FUSION can be advanced easily by changing the wings or in smaller (0.1mm) increments, by adjusting the screw, giving you control of your treatment and the best possible fit. Combine the use of the screw and wings (if required) to achieve a precise adjustment with 9.0 mm (-1 / +8 mm) of range.

FORWARD ADJUSTMENT



1 Hold upper splint with calibration screw facing towards you.

2 Fit the calibration tool into the adjustment keyhole.



3 Rotate the calibration tool 90° in the direction of the yellow arrow.

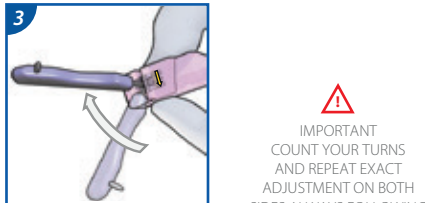
4 For every full 90° turn at direction of arrow you increase the distance for 0.1 mm

BACKWARD ADJUSTMENT



1 Hold upper splint with calibration screw facing towards you.

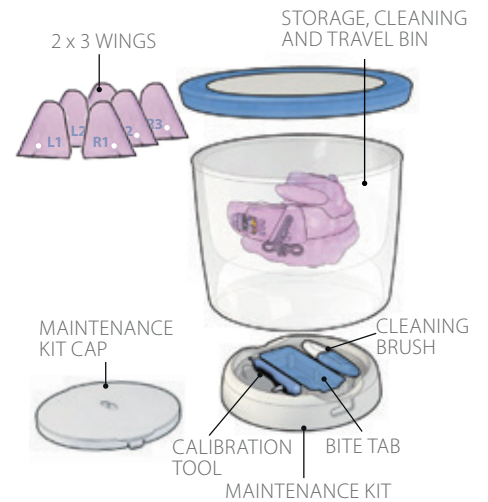
2 Fit the calibration tool into the adjustment keyhole.



3 Rotate the calibration tool 90° opposite to the yellow arrow.

⚠ IMPORTANT
COUNT YOUR TURNS
AND REPEAT EXACT
ADJUSTMENT ON BOTH
SIDES ALWAYS FOLLOWING
THE DIRECTION OF
THE ARROW

ACCESSORIES



The maintenance kit in the base holds everything you need to use and maintain your SomnoDent®.

Important: Keep a log of your SomnoDent® FUSION Calibration settings

Date	Wing number	Number of 90° Rotations

Date	Wing number	Number of 90° Rotations